

**CONNECTORS, PATCH
CORDS AND OTHERS**



BY FIBER SYSTEM

PRODUCT MANUAL

SPLITTERS

SPLITTERS



Product Overview

Optical Splitter is passive optical device that connects three or more fiber ends, dividing one input between two or more outputs, or combining two or more inputs into one output.

Optical splitter is generally deployed in passive optical network, giving carriers the ability to split optical signals to multiple customer premises, enabling the connection of multiple branch optical fibers in case that one trunk optical fiber was applied.

Raisecom provides various of optical splitters, split ratio is from 1:2, 1:4, 1:8, 1:16, 1:32 up to 1:64 with different encapsulations and optical connectors for a wide range of applications such as GPON, EPON and FTTx.

Main Characteristics



Application

- LAN, WAN & Metro Networks
- Telecommunication Networks
- Passive Optical Networks
- FTT(X) Systems
- CATV
- Value Added Module

Features

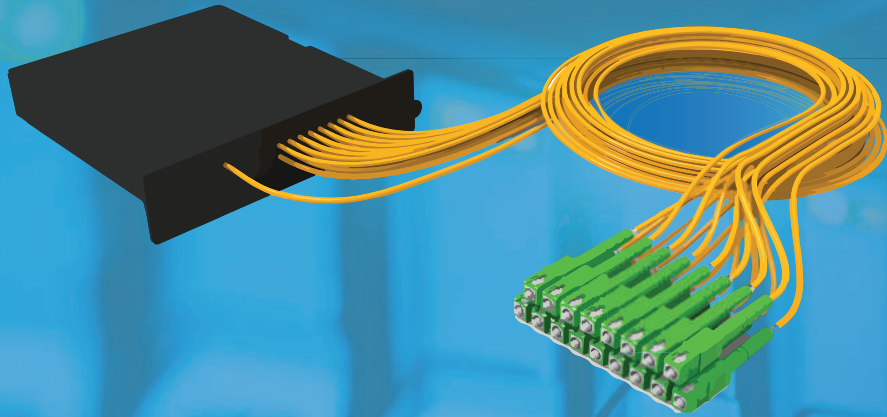
- Singlemode PLC Splitters in a variety of package types and configuration
- Optical performance 100% factory tested
- UPC, and APC polish types available for connectorized product
- Low Insertion Loss, Back Reflection and PDL
- Telcordia GR-CORE 1221 certified

Product Specs

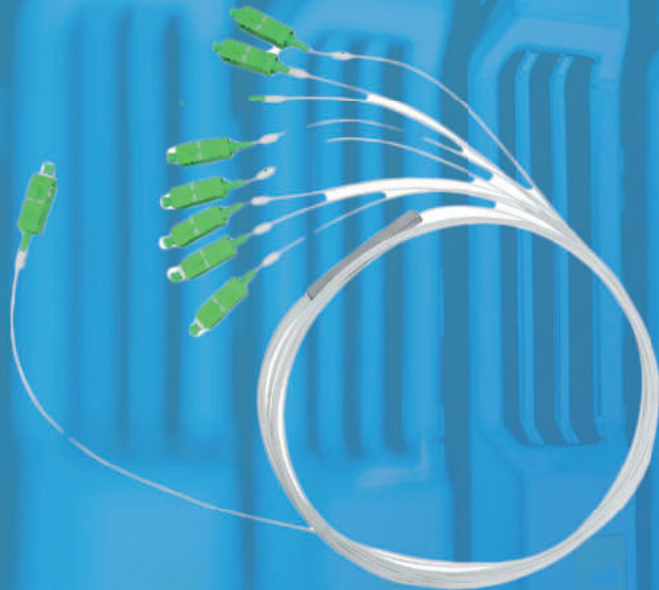
- Operating Window: 1260~1600nm
- Polarization Stability (dB): „_ 0.50dB
- Port Configuration: 1x4, 1x8, 1x16, 1x32
- Back Reflection (dB): „_ -55 UPC „_ -65 APC
- Operating Temperature (†C): -20~+70
- Storage Temperature (†C): -40~+85
- Package size: 8 x 8.1 x 5.2 mm

General Specifications

| Specifications | 1x2 | 1x4 | 1x8 | 1X16 | 1x32 | 1X64 | UNI TS |
|--------------------------|---------------------------|---------------------------|----------------------------|------|------|------------|-----------|
| Operating Wavelength | 1260 ~ 1650 | | | | | | nm |
| Insertion Loss (maximum) | 4.0 | 7.4 | 10.7 | 13.7 | 16.9 | twenty-one | dB |
| Uniformity | 0.4 | 0.6 | 0.8 | 1.2 | 1.5 | 2.5 | dB |
| PDL (maximum) | 0.2 | 0.2 | 0.3 | 0.3 | 0.3 | 0.4 | dB |
| Return loss (minimum) | 55 | | | | | | dB |
| Operating temperature | -40 orC ~ +85 | | | | | | orC |
| Dimensions | 4 (w) x 4 (h) x 40 (L) | 7 (w) x 4 (h) x 50 (L) | 12 (w) x 4 (h) x 60 (L) | | | | mm |



Splitter 1 x 16



Splitter 1 x 8



Splitter 1 x 4



CONTACTOS


 @szfibersystemcoltd

 @szfibersystemcoltd


 <http://szfibersystem.com/>

 sale@szfibersystem.com

Matriz (China):
Sala 201, Bloque A, Edificio Digital Garden City, 1079 Nanhai Avenue, Distrito Nanshan, Shenzhen, China

 +8618927463845
+8613714906306

Sucursal Ecuador:
Urbanización 6 de Diciembre, Pasaje San Blas OE6-49 y Princesa Toa, Quito, Ecuador

 +593984510113
+593983373961

Sucursal Perú:
Calle Huaman Poma de Ayala 349 y Av. Los Patriotas entre la quinta y sexta frente al parque Virgen de Guadalupe, San Miguel, Lima Perú.

 Fijo: +5115005857
Móvil : +51973644663