

**CONNECTORS, PATCH
CORDS AND OTHERS**

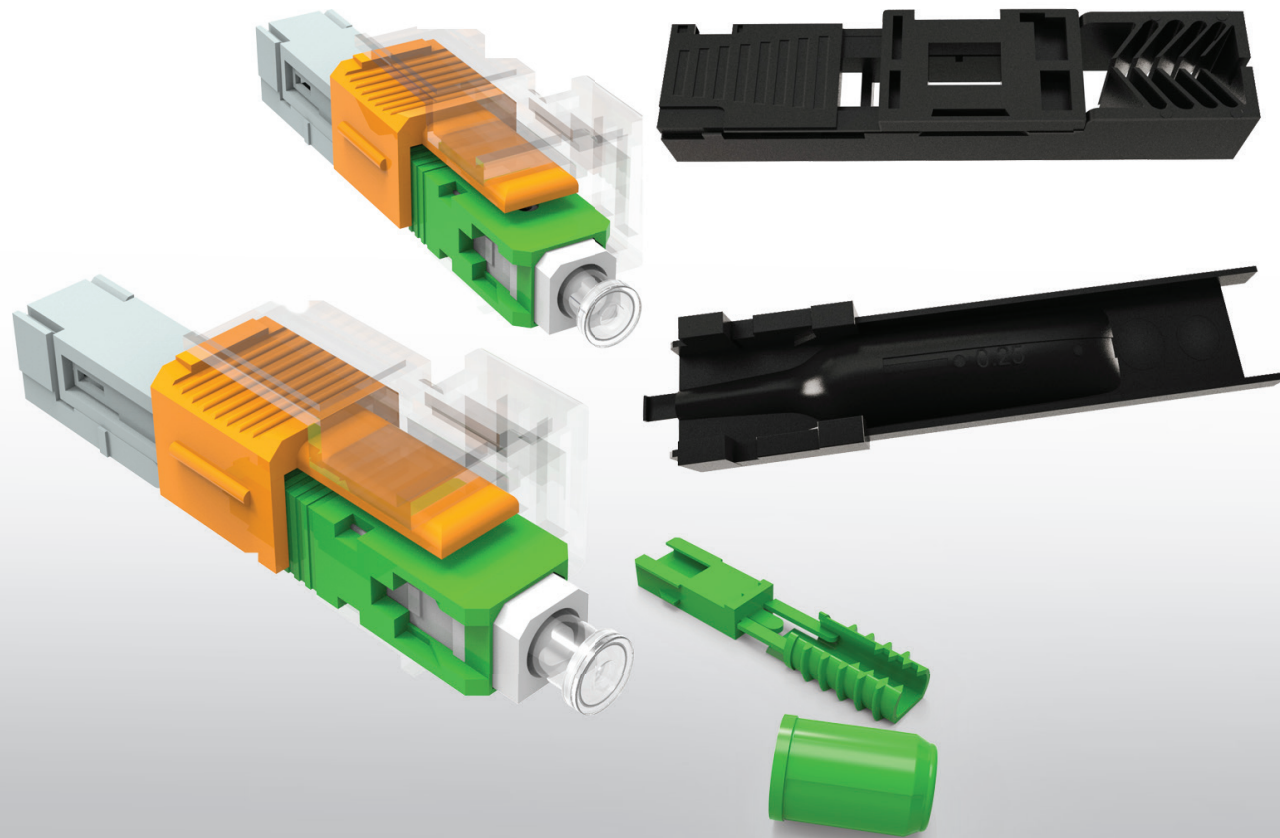


BY FIBER SYSTEM

PRODUCT MANUAL

CONNECTORS & COUPLERS

Connectors



Product Overview

Fiber optic GPON connectors are usually of the SC type. There are 2 colors.

The blue (SC-SPC) which is flat polished and the green (SC-APC) polished at an angle.

The connectors for the OLT are SC-SPC (blue). SC-SCP - SC-APC patch cords are used if the rest of the network is built with SC-APC connectors.

The connectors for the ONTs, (HG8245H, HG8247H...) are always SC-APC (green).

An SC-APC should never be connected with an SC-SPC as attenuation and reflections are introduced.

The color of the front is of no importance as long as the two connectors are of the same type. You can, for example, use two green connectors in a blue face.

Main Characteristics



Features

- Linkage structure design, when docking with equipment and joints, the reserved microbend remains unchanged;
- Double V-slot structure design, fiber optic docking is stable and reliable;
- The core structure: the use of normally closed elastic fastening method, excellent technical indicators;
- Applicable optical cable: 2.0mm×3.0mm & 2.0mm×1.6mm butterfly cable;
- Easy to operate, fast construction, high installation success rate, long life cycle, easy maintenance in the later period.

Application

- Applied to open FTTH fiber terminal
- Used in closure boxes, cabinets, terminal boxes, etc.
- Recovery and maintenance in fiber breakage and other accidents
- LAN, WAN, data and video transmission
- Construction and maintenance of fiber access for end users
- Fiber entry for mobile base stations

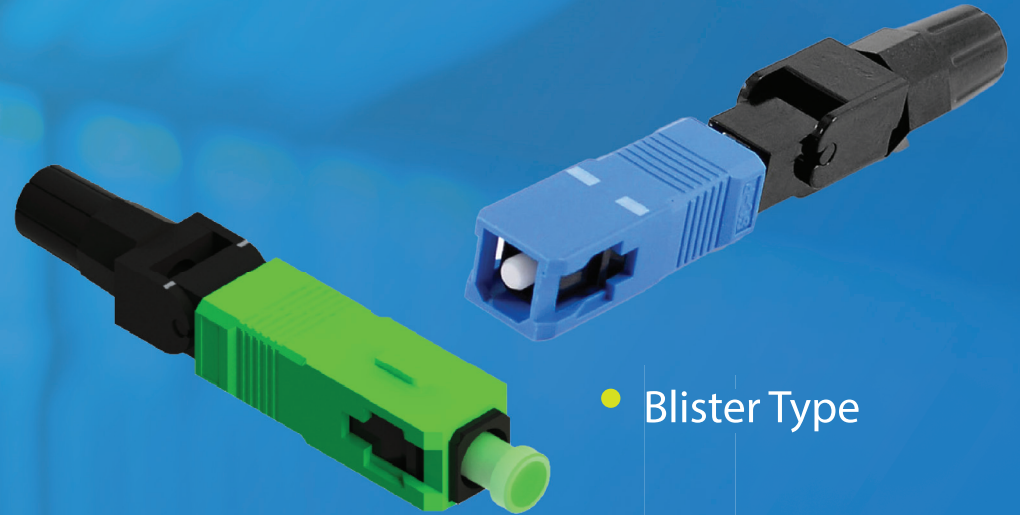
General Specifications

Characteristic	SM , MM			
Connector type	FC/SC/ST/LC/MU/MT-RJ/ESCON/E2000			
Diameter(mm)	0.9,2.0,3.0			
Polishing grade	SM PC	MM PC	UPC	APC
Insertion loss	≤0.3dB	≤0.4dB	≤0.2dB	≤0.3dB
Return loss	≥40dB		≥50dB	≥65dB
Interchangeability	≤0.2dB			
Repeatability	≤0.2dB			
Operation temperature	-40~+80			

Blue and Green Connectors



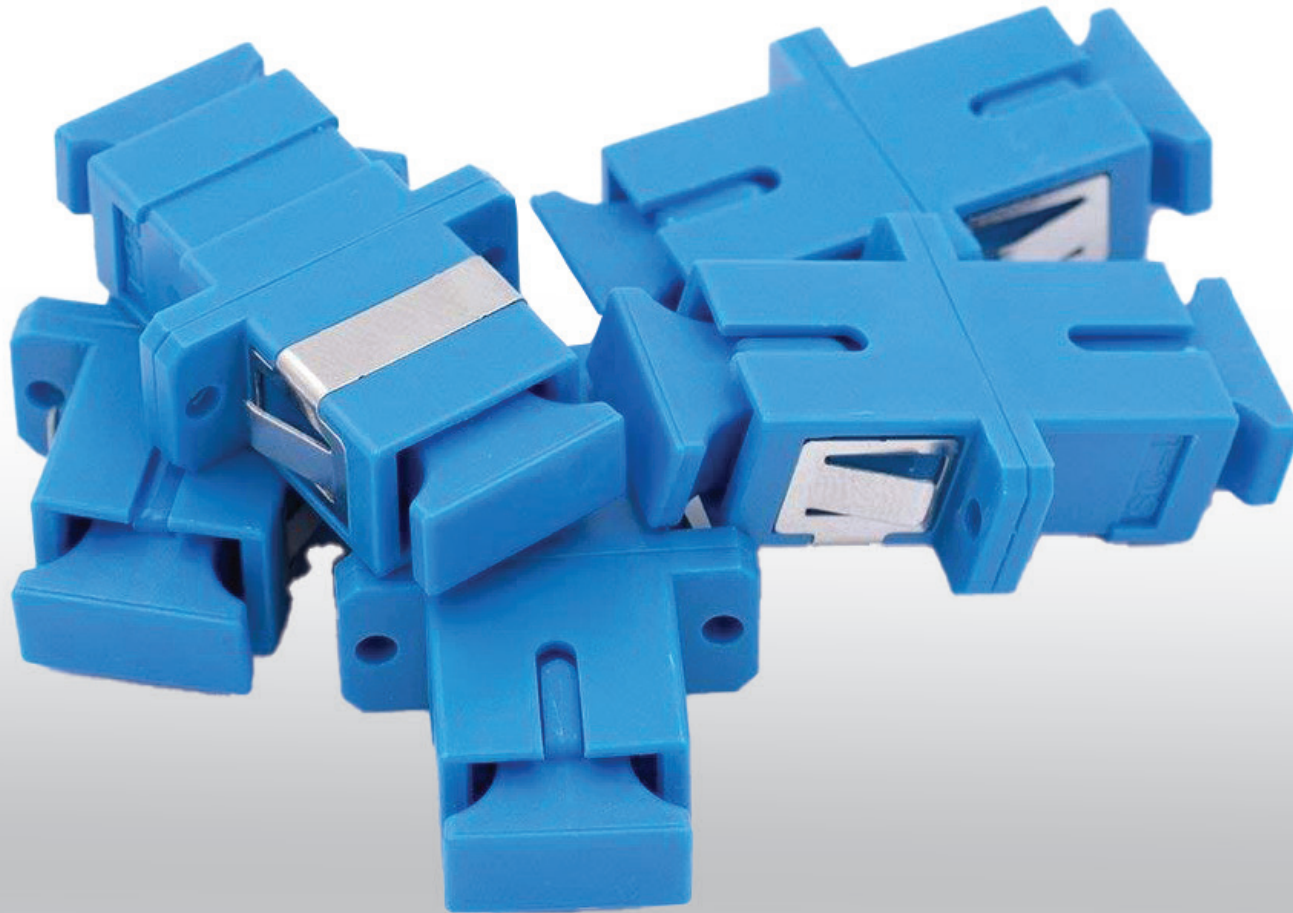
• Bag Type



• Blister Type

- Outdoor use, waterproof, anti-corrosive, with good mechanical and environmental properties
- Contains metal reinforced steel wire, good mechanical properties and strong tensile strength
- Small insertion loss and large return loss
- Single or multimode can be selected according to needs. The number of optical cable cores is 2, 4, 6, 8, and 12 cores

Couplers



Main Characteristics



- Accurate Dimension
- Good Interchangeability and Repeatability
- Good Durability
- Good Temperature Performance

Application

- Optical Fiber Communication System
- CATV
- Optical Fiber Sensor
- Optical test Instruments, etc

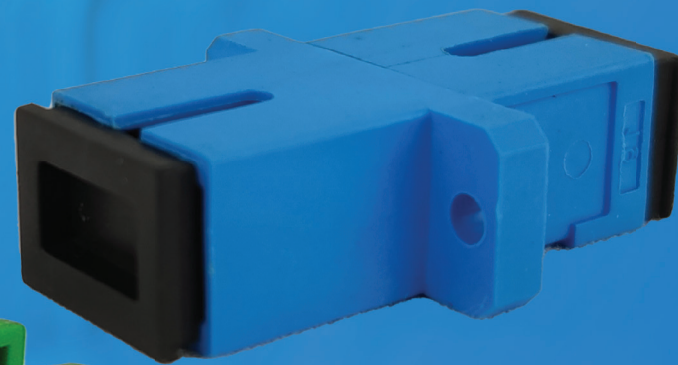
General Specifications

Connector type	SC
Insertion Loss(dB)	≤ 0.20
Repeatability	≤ 0.10
Interchangeability	≤ 0.20
Sleeve Material	Ceramic
Operating Temperature(°C)	-40 ~ +85 -25 ~ +70
Storage Temperature(°C)	-40 ~ +85
Industry Standard	Bell core TA-NWT-001209

Blue and Green Couplers



• SC/ APC



• SC/ UPC



CONTACTOS


 @szfibersystemcoltd

 @szfibersystemcoltd


 <http://szfibersystem.com/>

 sale@szfibersystem.com

Matriz (China):
Sala 201, Bloque A, Edificio Digital
Garden City, 1079 Nanhai Avenue, Distri-
to Nanshan, Shenzhen, China

 +8618927463845
+8613714906306

Sucursal Ecuador:
Urbanización 6 de Diciembre, Pasaje San
Blas OE6-49 y Princesa Toa, Quito, Ecu-
ador

 +593984510113
+593983373961

Sucursal Perú:
Calle Huaman Poma de Ayala 349 y Av.
Los Patriotas entre la quinta y sexta
frente al parque Virgen de Guadalupe,
San Miguel, Lima Perú.

 Fijo: +5115005857
Móvil : +51973644663