

**ROUTER  
CCR**



**BY FIBER SYSTEM**

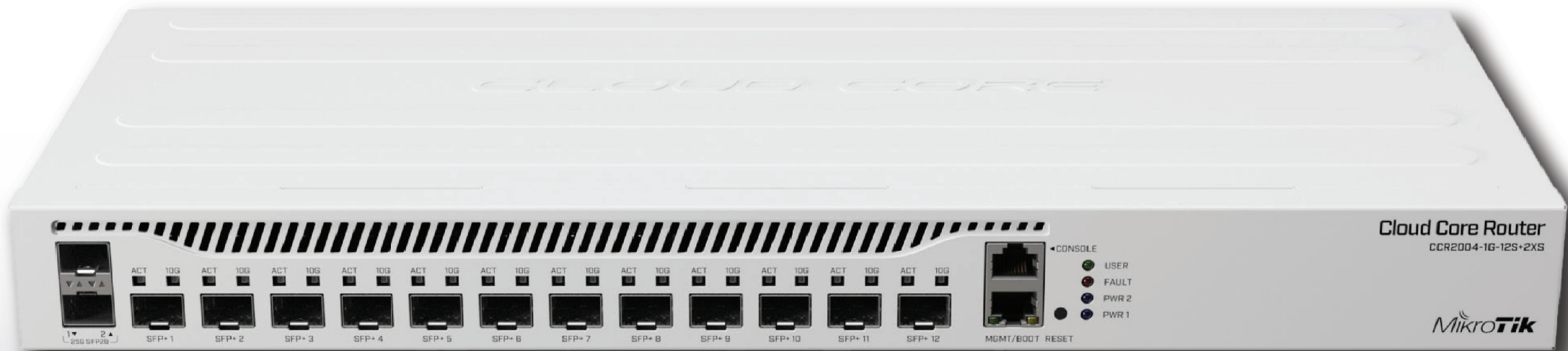
**PRODUCT MANUAL**

---

CCR2004-1G-12S+2XS

# CCR2004-1G-12S+2XS

---



# Product Overview

---

Introducing The Connectivity Router - your best companion when it comes to SFP+ and SFP28 management! 10 and 25 Gbps ports in a single device to make your life easier.

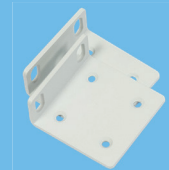
CCR2004-1G-12S+2XS is equipped with the new AL32400 1.7 GHz quad core CPU and features 12x 10G SFP+ and 2x 25G SFP28 ports, dual redundant power supplies and 1U rackmount case.

The “Improvise. Adapt. Overcome.” mindset can be very helpful, but sometimes you simply need a device that works and solves the problem without additional tinkering. The new CCR2004-1G-12S+2XS does just that – forget about all connectivity troubles and expand your setup in any way you please. This is our router with the most powerful single-core performance so far. It provides incredible results in single tunnel (up to 3.4 Gbps) and BGP feed processing.

## Included parts



2 IEC  
Cords



Rackmount  
bracket white



Fastening set for  
rackmount case

# Main Characteristics



- CPU: AL32400 1700 MHz
- CPU core count: 4
- Size of RAM: RouterOS v6 1792MB  
ECC / RouterOS v7 4GB ECC
- RAM type: DDR4
- Storage 128 MB, NAND



- Operating System: RouterOS
- Router license level: 6
- Supported input voltage:  
AC power supply 100 - 240 V
- Operating Temperature: -20°C to  
+60°C tested
- Max Power Consumption: 49 W

# Technical Specifications

---

<b>Product code</b>	CCR2004-1G-12S+2XS
<b>CPU</b>	AL32400 1700 MHz
<b>CPU core count</b>	4
<b>Size of RAM</b>	RouterOS v6 1792MB ECC / RouterOS v7 4GB ECC
<b>RAM type</b>	DDR4
<b>Storage</b>	128 MB, NAND
<b>Number of 1G Ethernet ports</b>	1
<b>Number of 10G SFP+ ports</b>	12
<b>Number of 25G SFP28 ports</b>	2
<b>Operating system</b>	RouterOS
<b>Router license level</b>	6
<b>Supported input voltage</b>	AC power supply 100 - 240 V
<b>Number of AC inputs</b>	2
<b>Dimensions</b>	443 x 224 x 44 mm
<b>Operating temperature</b>	-20°C to +60°C tested
<b>Max power consumption</b>	49 W



# CONTACTOS


 @szfibersystemcoltd

 @szfibersystemcoltd


 <http://szfibersystem.com/>

 [sale@szfibersystem.com](mailto:sale@szfibersystem.com)

**Matriz (China):**  
Sala 201, Bloque A, Edificio Digital Garden City, 1079 Nanhai Avenue, Distrito Nanshan, Shenzhen, China

 +8618927463845  
+8613714906306

**Sucursal Ecuador:**  
Urbanización 6 de Diciembre, Pasaje San Blas OE6-49 y Princesa Toa, Quito, Ecuador

 +593984510113  
+593983373961

**Sucursal Perú:**  
Calle Huaman Poma de Ayala 349 y Av. Los Patriotas entre la quinta y sexta frente al parque Virgen de Guadalupe, San Miguel, Lima Perú.

 Fijo: +5115005857  
Móvil : +51973644663