

**OPTICAL LINE
TERMINAL**



BY FIBER SYSTEM

PRODUCT MANUAL

ZXA10 C320

ZXA10 C320



Product Overview

The ZXA10 C320 is the industry's first compact FTTx central office access platform oriented to next-generation PON evolution. It is vastly deployed for low-density areas, outdoor deployment, and limited space scenarios. It offers ultrafast bandwidth, meets full-service access and multiple scenario requirements, and provides carrier-class QoS and security guarantee.

Quick Details:

- Compact Frame: 2U height, 19-inch rack ins
- Unified Platform: Tallation
- User-side Interfaces: GPON/P2P/XG-PON18/16*xPON per board, 24/48*P2P per

Main Characteristics

Compatible with C300

- The software platform, version planning, and command line interfaces are consistent with those of the ZXA10 C300.
- Compatible with the service cards of the ZXA10 C300.



High Reliability

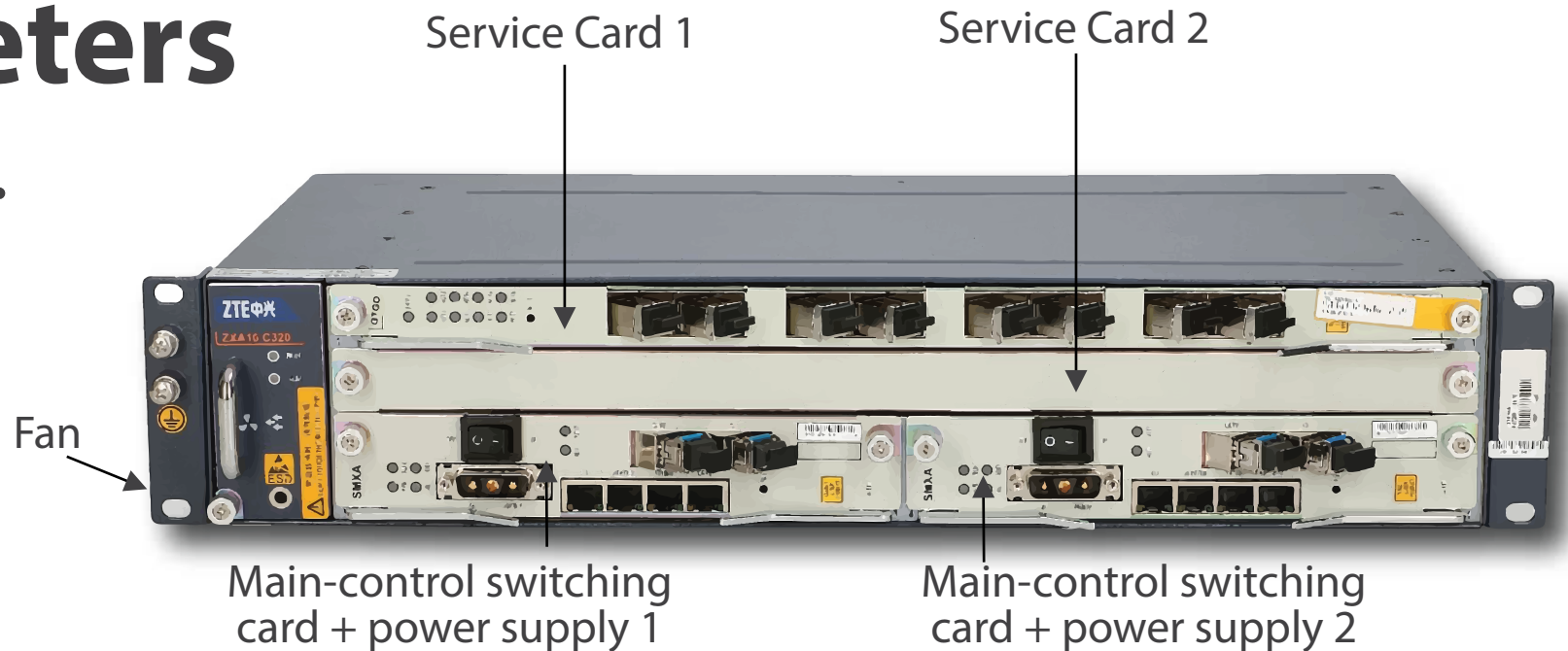
- Hot-swap of the main- control switching card
- Power redundancy: dual DC, AC+DC
- Uplink: LACP/UAPS/RSTP/MSTP/E RPS (G.8032) PON protection: Type B, Type C



Enhanced Functions

- S+C VLAN, QoS, multicast, E-OAM
- Sync-E, 1588V2
- Comprehensive Security: PON encryption, user/port isolation, broadcast suppression, IP/MAC binding, anti- spoofing/migration, ACL.

Technical Parameters



ZXA10 C320

Specifications

Dimensions

86.1 mm (height) x 482.6 mm (width) x 270 mm (depth)

Power Supply

Dual DC: 48V/60V AC: 100V~240V

Cabinet

Indoor : 2200mm×600mm×300mm standard cabinet Outdoor : EC90EB, EC70E

Main-Control Switching Card
SMXA

Panel interfaces : 1*10GE/GE(optical)+1*GE/FE(Optical)+1*GE/FE(electrical)
+1*serial port+1*management FE+1*environment detecting port

Ethernet uplink port : MAX. 2*10GE+4*GE or 6*GE

Service Card
(2 slots)

GTGO(8*GPON) /GTGH(16*GPON)/FTGK(48*P2P)/GTXO(8*XG-PON1)

Product Value

Small Capacity ZX10 C320



Saving Footprint

- Suitable for installation at the same site with transmission equipment and base stations.
- Suitable for scenarios with limited space.
- Reducing power, air conditioning and reliability requirements.

Long Distance and Wide Coverage

- Suitable for scenarios with sparse users such as suburbs, small towns and rural areas.
- Suitable for long distance access that requires the OLT be deployed close to the users.
- Suitable for scenarios without enough backbone fiber and where the OLT cannot be deployed centrally

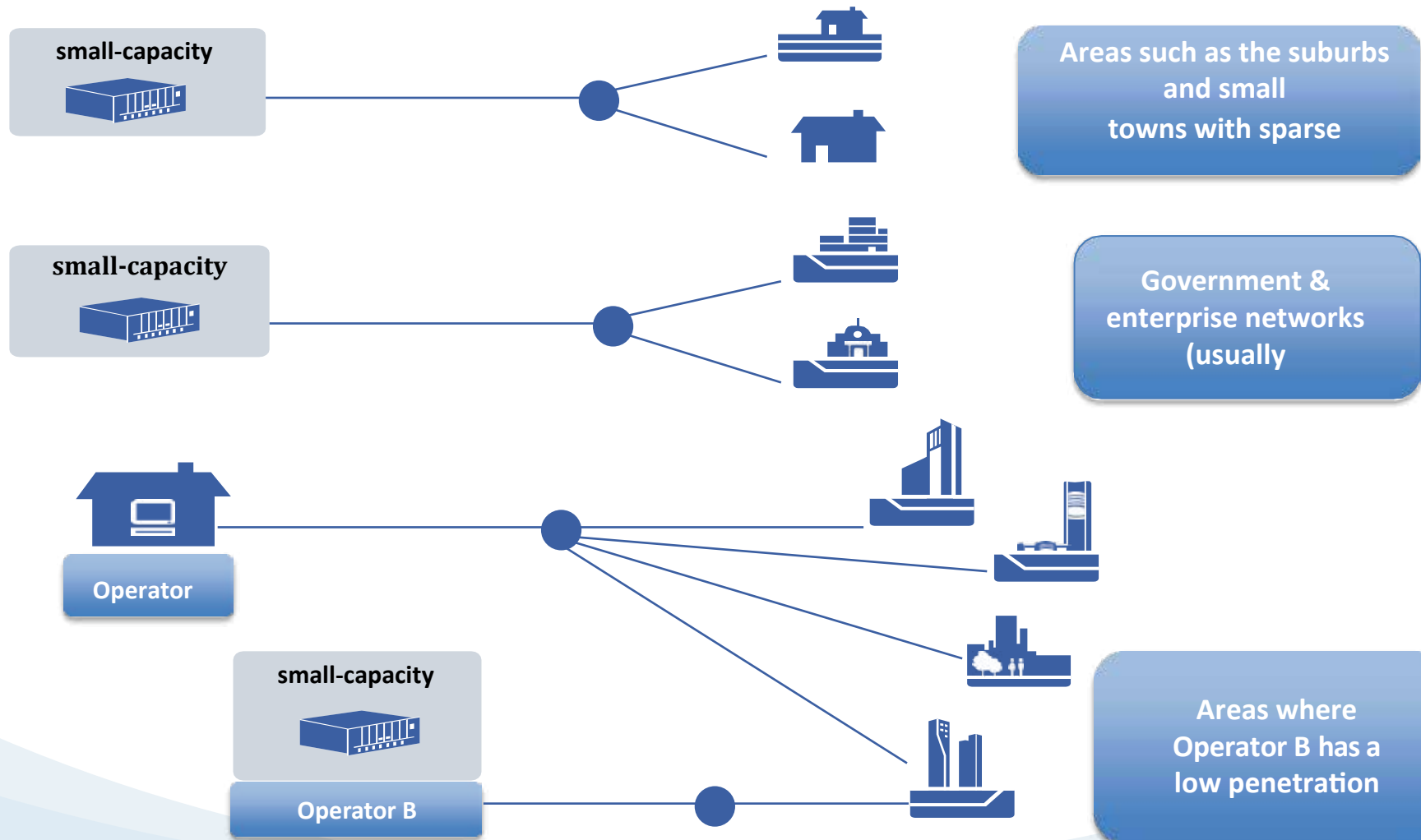
Reducing Direct/Indirect Costs

- For the same total bandwidth, the backbone fiber required for installing small-capacity OLTs is just 1/5 of that for large-capacity OLTs.
- Reducing configuration costs, enhancing our price competitiveness in government & enterprise network and CPN projects.

Saving Power

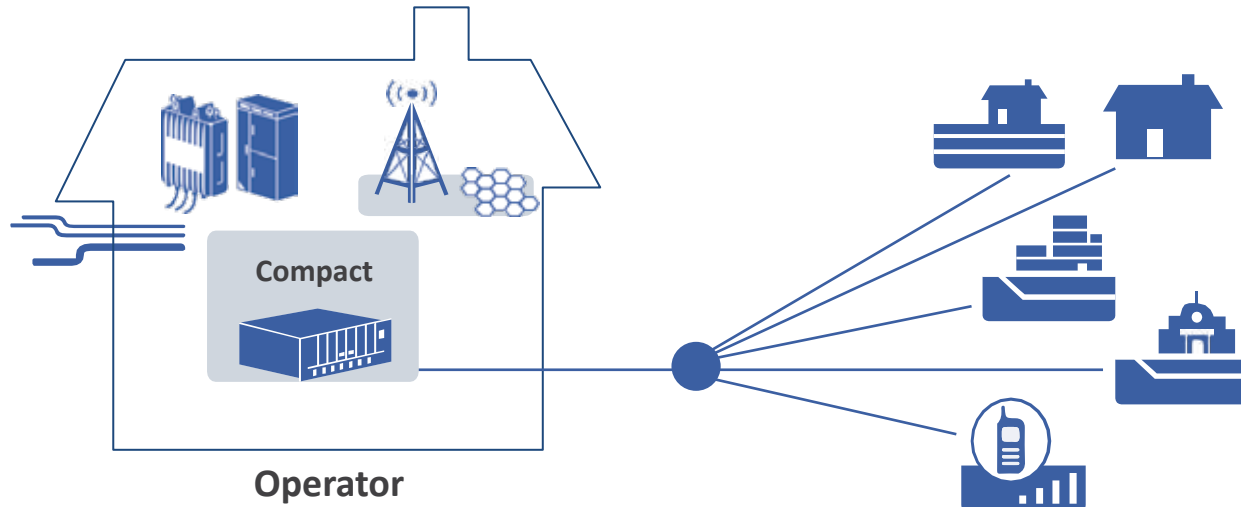
- With the same configuration of PON ports and uplink ports, the power consumption of the small-capacity OLT is 45% less than the large ones

Small-Capacity OLT Deployment Scenarios

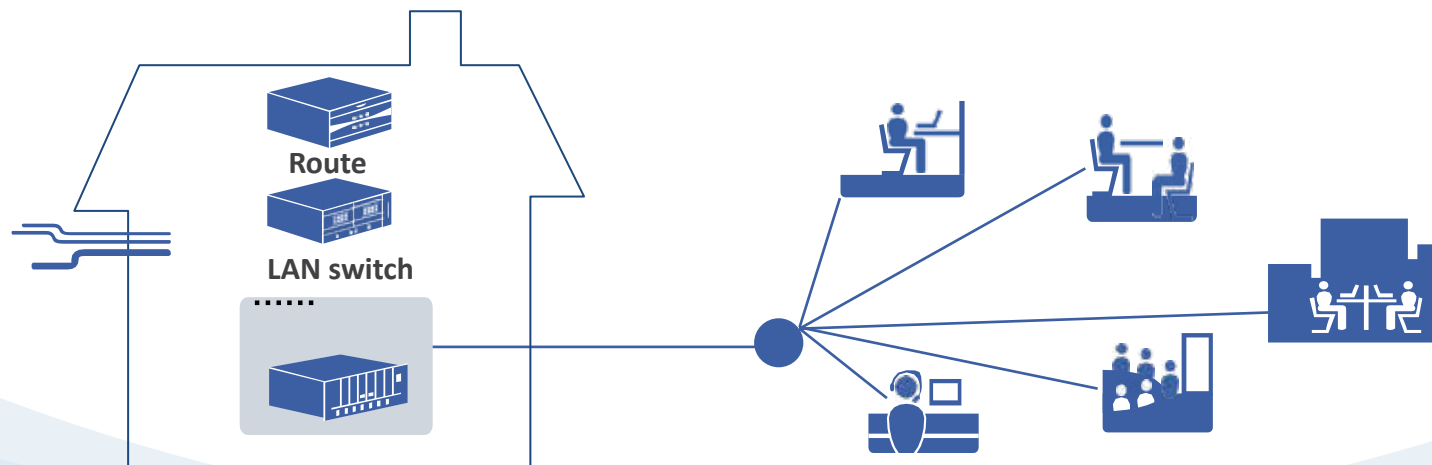


Compact OLT Saves Footprint and Reduces Support Requirements

Installation at the same site with the transmission equipment and base station.

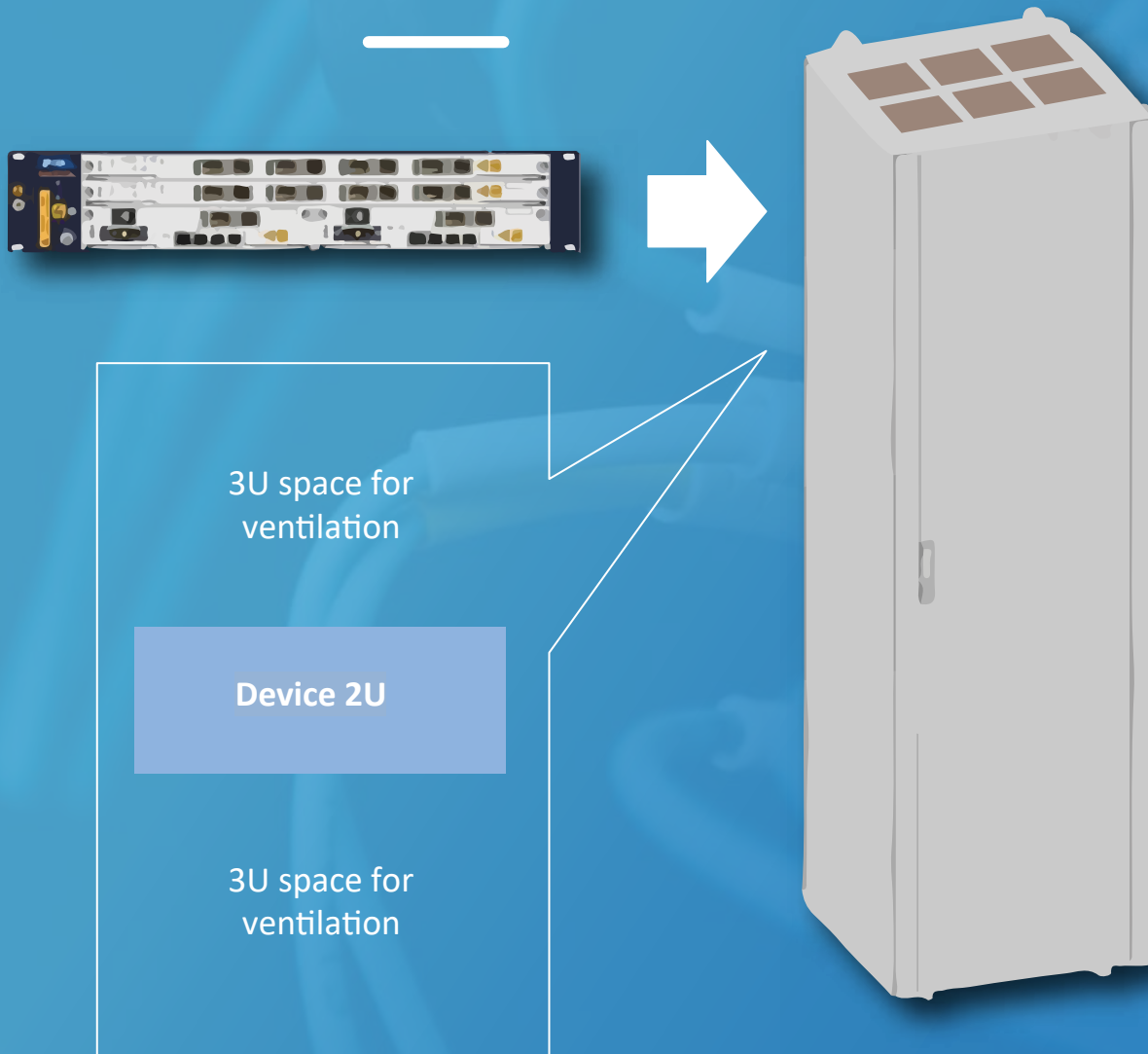


Installation at the same site with other equipment



Government & Enterprise Network

Main Characteristics

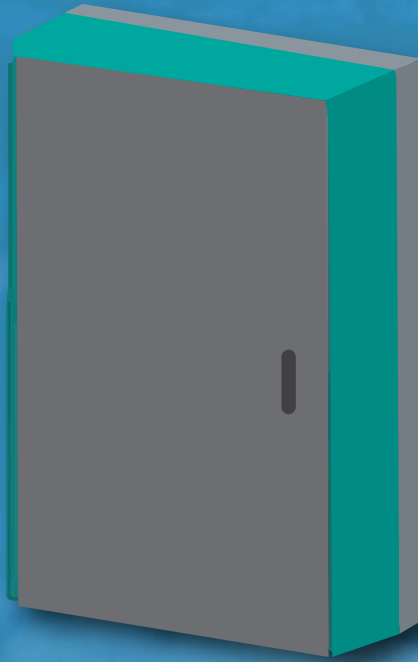


Reducing Direct/Indirect Costs

- The single C320 is suggested to be installed in the free space of the existing 19-inch rack.
- Full installation of C320 in the same rack is not better than one C300 considered of economy and uplink resource

DC or AC 19 - inch

Outdoor Cabinet for ZXA10



Main Device
Compartment



Cable Distribution
Module

Power Distribution
Box

Product configuration	1* ZXA10 C320 shelf
Dimensions (H*W*D)	1200 mm * 650 mm * 250 mm
ODF	9*6-core SC or 108 cores LC
Storage battery	12AH
Installation mode	Wall-mounted/pole-mounted/ground-mounted
Environment detecting module	EMM
Heat dissipation type	No cooling system or external fan
Temperature range	-30°C - +45°C
Protection Level	IP55

As an outdoor telecom cabinet, the EC90EB provides a safe and reliable operating environment for compact integrated access devices such as the ZXA10 C320.

Outdoor Cabinet for ZX A10



Product configuration	2*ZX A10 C320 shelf
Dimensions (H*W*D)	1300 mm * 800 mm * 350 mm
ODF	48-core SC
Storage battery	24/38/65AH
Installation mode	wall-mounted /pole-mounted/cement platform mounted/elevated platform mounted
Environment detecting module	EMM
Heat dissipation type	Through an enclosed heat exchanger
Temperature range	-40°C - +50°C
Protection Level	IP55



CONTACTOS



@szfibersystemcoltd



@szfibersystemcoltd



<http://szfibersystem.com/>



sale@szfibersystem.com

Matriz (China):

Sala 201, Bloque A, Edificio Digital Garden City, 1079 Nanhai Avenue, Distrito Nanshan, Shenzhen, China



+8618927463845
+8613714906306

Sucursal Ecuador:

Urbanización 6 de Diciembre, Pasaje San Blas OE6-49 y Princesa Toa, Quito, Ecuador



+593984510113
+593983373961

Sucursal Perú:

Calle Huaman Poma de Ayala 349 y Av. Los Patriotas entre la quinta y sexta frente al parque Virgen de Guadalupe, San Miguel, Lima Perú.



Fijo: +5115005857
Móvil : +51973644663