

**FIBRA ÓPTICA**



**BY FIBER SYSTEM**  
**PRODUCT MANUAL**

---

UTPS

# Product Overview

---

Unshielded twisted pair (UTP) is a type of cable that can carry voice or data signals. The name of the cable refers to its construction, which contains twisted pairs of cables and lacks a protective shield against electronic interference.

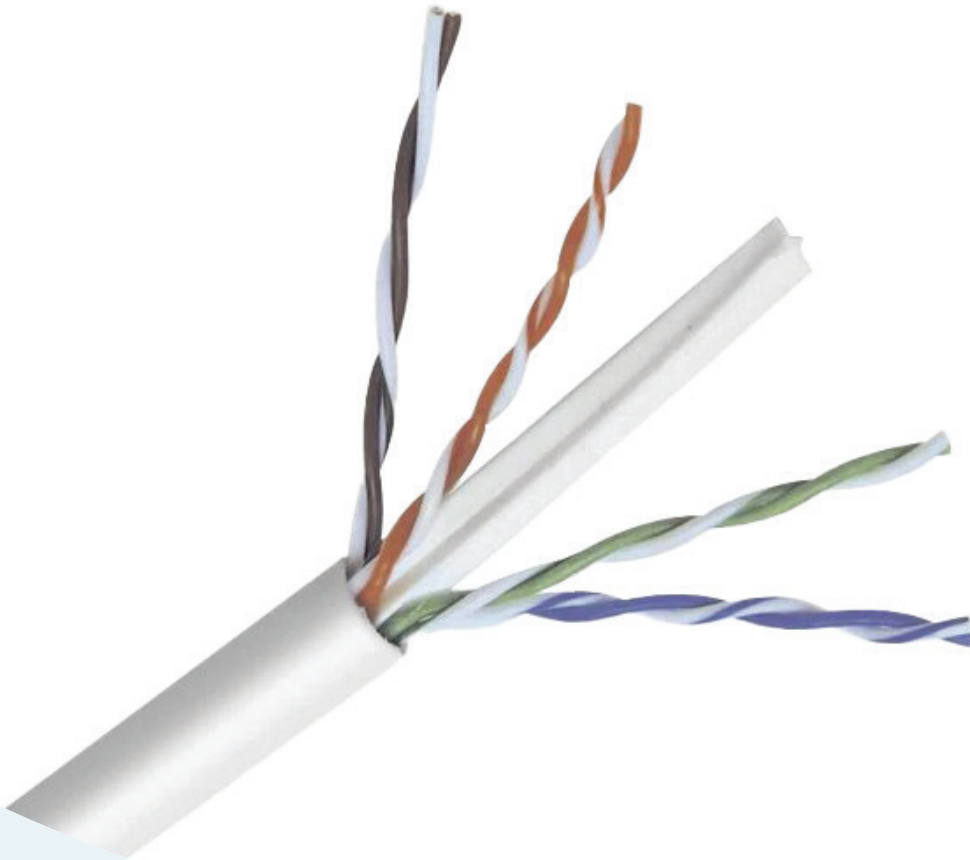
Because UTP cable is unshielded, it cannot be used in areas that are prone to electromagnetic interference. It is limited to a maximum length of 100 meters. On the other hand, it is relatively cheap, easy to work with, and its small diameter allows installation in tight spaces. UTP cable is widely used in networking and telecommunications applications.

# UTP CAT5 INTERIOR-EXTERIOR



- U / UTP 24AWGX4P CAT.5E CM (INDOOR / OUTDOOR)
- 100% copper conductor
- HDPE insulation
- 4 Pairs of 24AWG
- LAN - Local Area Networking
- Cat.5e - Transmission characteristics up to 100 MHz
- U / UTP - Unshield Twisted Pair
- CM - They are cables indicated for application in very busy ducts, in places without forced air flow, in installations with a same environment or in premises with fire propagation conditions similar to these.
- CONDUCTOR: Copper
- INSULATION: HDPE
- PAIRS: The insulated conductors are paired two by two, forming the pairs in colors:
  - Pair 1 - Blue / Light Blue,
  - Pair 2 - White / Orange
  - Pair 3 - Green / Light Green and
  - Pair 4 - Brown / Light Brown
- CORE: The pairs are wired with adequate pitch
- OUTER COVER: Outer cover of flame-retardant black color.

# UTP CAT6 INTERIOR-EXTERIOR



- High performance cables
- Designed for Voice, Data, Security (Megapixel) applications and Video Applications.
- CCTV IP Megapixel / Analog video installations / Local networks of high speed.
- Wireless networks
- Gigabit voice / data installations.
- Conductor: 100% Copper
- For high data rate, Fast Ethernet and Gigabit Ethernet applications
- Designed in indoor facilities.
- Exterior Color: BLUE
- Caliber: 23
- Insulation: PVC
- Without shielding.
- Diameter: 6.1 mm.
- Frequency: 250 MHz.
- Application: In...



# CONTACTOS


 @szfibersystemcoltd

 @szfibersystemcoltd


 <http://szfibersystem.com/>

 [sale@szfibersystem.com](mailto:sale@szfibersystem.com)

**Matriz (China):**  
Sala 201, Bloque A, Edificio Digital  
Garden City, 1079 Nanhai Avenue, Distri-  
to Nanshan, Shenzhen, China

 +8618927463845  
+8613714906306

**Sucursal Ecuador:**  
Urbanización 6 de Diciembre, Pasaje San  
Blas OE6-49 y Princesa Toa, Quito, Ecu-  
ador

 +593984510113  
+593983373961

**Sucursal Perú:**  
Calle Huaman Poma de Ayala 349 y Av.  
Los Patriotas entre la quinta y sexta  
frente al parque Virgen de Guadalupe,  
San Miguel, Lima Perú.

 Fijo: +5115005857  
Móvil : +51973644663